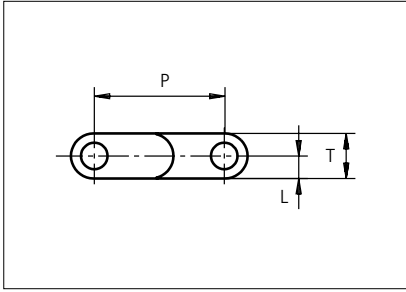
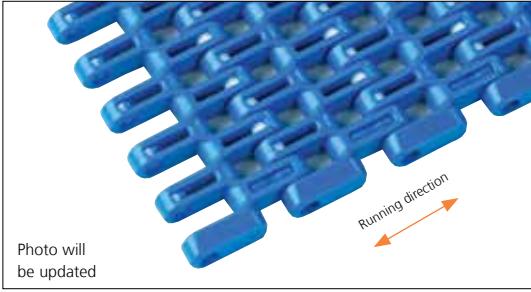




Plastic Modular Belt

Series **uni SNB** Type **M2 34% Open**



Straight running belt
 Nominal pitch: 25.4 mm (1.00 in)
 Surface type: Flat
 Surface opening: 34%
 Backflex radius: 30.0 mm (1.20 in)
 Pin diameter: 5.0 mm (0.20 in)

*P (Nominal)

| Belt material & color | POM-D B | PP B | PP G | PP W | PE N | PE B | | mm | in | | mm | in | |
|-----------------------|---|--|--|---|--|--|--|----------|--------------------|------|------|----------|-----|
| | Pin material & color | PP B | | PP W | | PE N | | | P (Nominal) | 25.4 | 1.00 | L | 4.4 |
| | | | | | | | | T | 8.8 | 0.35 | - | - | - |

Non standard material and color: See uni Material and Color Overview.

| Belt width | | Permissible tensile force (Belt/pin material) | | | | | | Belt weight (Belt/pin material) | | | | | | *Min. No. drive sprocket per shaft | Number of wear strips (Min. No.) | |
|------------|------|---|------|-------|------|-------|------|---------------------------------|-------|-------|-------|-------|-------|------------------------------------|----------------------------------|----------------|
| | | POM-D/PP | | PP/PP | | PE/PE | | POM-D/PP | | PP/PP | | PE/PE | | | **Carry (pcs) | **Return (pcs) |
| mm | in | N | lbf | N | lbf | N | lbf | kg/m | lb/ft | kg/m | lb/ft | kg/m | lb/ft | | | |
| 45 | 1.8 | 1034 | 232 | 660 | 148 | 440 | 99 | 0.3 | 0.19 | 0.2 | 0.13 | 0.2 | 0.13 | 2 | 1 | 1 |
| 77 | 3.0 | 1810 | 407 | 1155 | 260 | 770 | 173 | 0.5 | 0.33 | 0.3 | 0.22 | 0.3 | 0.23 | 2 | 2 | 2 |
| 153 | 6.0 | 3596 | 808 | 2295 | 516 | 1530 | 344 | 1.0 | 0.65 | 0.7 | 0.44 | 0.7 | 0.45 | 2 | 2 | 2 |
| 229 | 9.0 | 5382 | 1210 | 3435 | 772 | 2290 | 515 | 1.4 | 0.97 | 1.0 | 0.66 | 1.0 | 0.68 | 2 | 2 | 2 |
| 305 | 12.0 | 7168 | 1611 | 4575 | 1028 | 3050 | 686 | 1.9 | 1.29 | 1.3 | 0.88 | 1.3 | 0.90 | 3 | 3 | 2 |
| 381 | 15.0 | 8954 | 2013 | 5715 | 1285 | 3810 | 856 | 2.4 | 1.61 | 1.6 | 1.10 | 1.7 | 1.13 | 3 | 3 | 2 |
| 457 | 18.0 | 10740 | 2414 | 6855 | 1541 | 4570 | 1027 | 2.9 | 1.93 | 2.0 | 1.32 | 2.0 | 1.35 | 4 | 4 | 2 |
| 533 | 21.0 | 12526 | 2816 | 7995 | 1797 | 5330 | 1198 | 3.4 | 2.26 | 2.3 | 1.54 | 2.3 | 1.58 | 4 | 4 | 2 |
| 609 | 24.0 | 14312 | 3217 | 9135 | 2054 | 6090 | 1369 | 3.8 | 2.58 | 2.6 | 1.76 | 2.7 | 1.80 | 5 | 5 | 3 |
| 686 | 27.0 | 16121 | 3624 | 10290 | 2313 | 6860 | 1542 | 4.3 | 2.90 | 2.9 | 1.98 | 3.0 | 2.03 | 5 | 5 | 3 |
| 762 | 30.0 | 17907 | 4025 | 11430 | 2569 | 7620 | 1713 | 4.8 | 3.23 | 3.3 | 2.20 | 3.4 | 2.25 | 6 | 6 | 3 |
| 838 | 33.0 | 19693 | 4427 | 12570 | 2826 | 8380 | 1884 | 5.3 | 3.55 | 3.6 | 2.42 | 3.7 | 2.48 | 6 | 6 | 3 |
| 914 | 36.0 | 21479 | 4828 | 13710 | 3082 | 9140 | 2055 | 5.8 | 3.87 | 3.9 | 2.64 | 4.0 | 2.70 | 7 | 7 | 4 |

Additional standard belt widths are available in steps of 76.1 mm (3.00 in). Additional non-standard belt widths are available in steps of 12.7 mm (0.50 in).

| | | | | | | | | | | | | | | | | |
|------|------|-------|-------|-------|------|-------|------|------|------|-----|------|-----|------|----|----|---|
| 1979 | 77.9 | 46507 | 10455 | 29685 | 6673 | 19790 | 4449 | 12.5 | 8.38 | 8.5 | 5.72 | 8.7 | 5.85 | 14 | 14 | 7 |
|------|------|-------|-------|-------|------|-------|------|------|------|-----|------|-----|------|----|----|---|

Additional standard belt widths are available in steps of 76.1 mm (3.00 in). Additional non-standard belt widths are available in steps of 12.7 mm (0.50 in).

| | | | | | | | | | | | | | | | | |
|------|-------|-------|-------|-------|-------|-------|------|------|-------|------|------|------|------|----|----|----|
| 2969 | 116.9 | 69772 | 15685 | 44535 | 10011 | 29690 | 6674 | 18.7 | 12.57 | 12.8 | 8.58 | 13.1 | 8.78 | 20 | 20 | 10 |
|------|-------|-------|-------|-------|-------|-------|------|------|-------|------|------|------|------|----|----|----|

General belt tolerance is +0/-0.4% at 23°C/73°F and 50% RH. For exact belt width contact Customer Service. Non standard belt width on request.

*Max. Load per Drive Sprocket. Belt material: POM-D 1400 N (315 lbf). PP 1100 N (247 lbf). PE 1100 N (247 lbf).

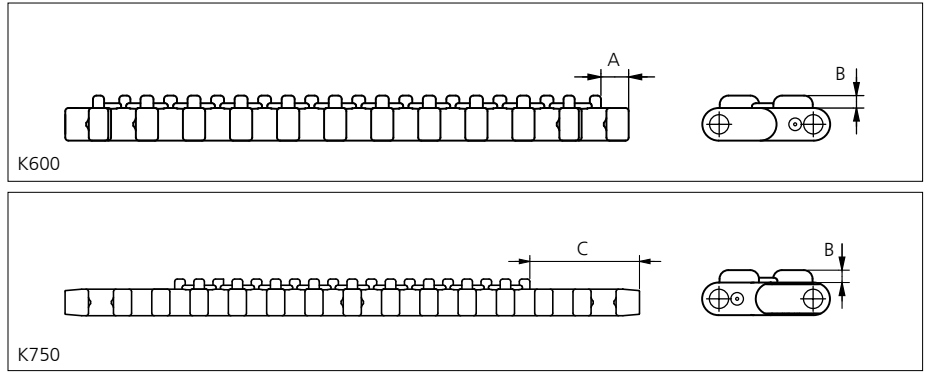
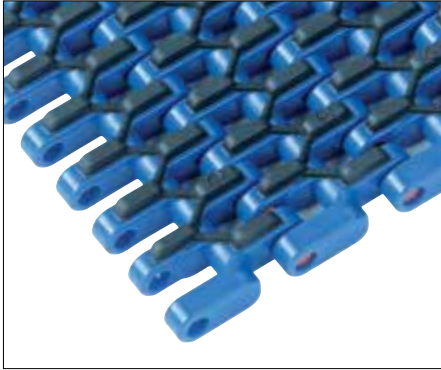
**Max. Spacing between wear strips. Carry: 152.0 mm (6.00 in); Return: 304.0 mm (12.00 in).

= Single Link



Accessories

Rubber Top

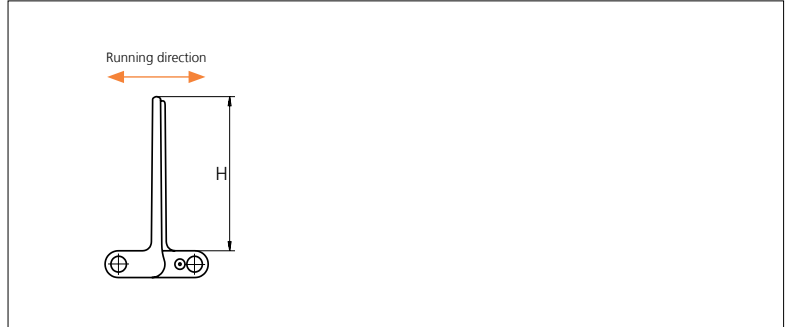
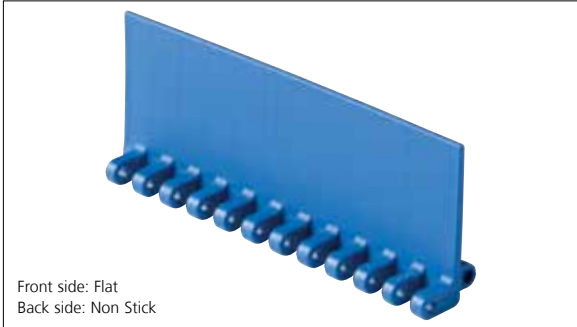


| Type | Belt material & color | Rubber material & color | A | | B | | C | | Link size | Width | |
|-------------|-----------------------|-------------------------|-----|------|-----|------|------|------|-----------|-------|------|
| | | | mm | in | mm | in | mm | in | | mm | in |
| M2 20% Flat | PP B | 03 K | 7.5 | 0.30 | 3.4 | 0.13 | 36.0 | 1.41 | K300 | 77.0 | 3.00 |
| | PP W | 03 N | | | | | | | K600 | 152.4 | 6.00 |
| | | | | | | | | | K750 | 190.5 | 7.50 |

Non Standard material and color: See uni Material and Color Overview.

Accessories

Flight

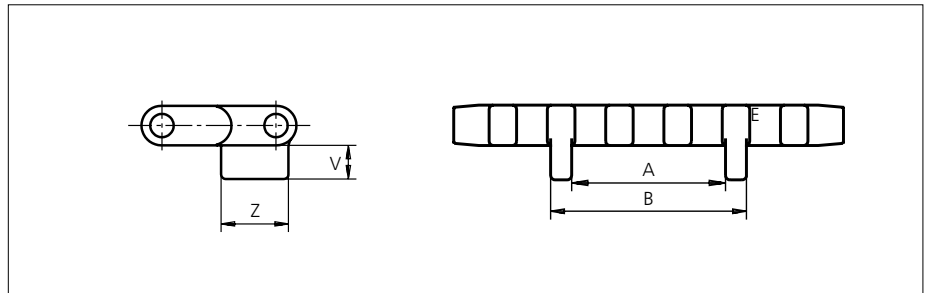


| Type | Flight Material & color | | H | | Link size | Width | |
|-----------------------|-------------------------|------------------------|-------|------|-----------|-------|------|
| | | | mm | in | | mm | in |
| M2 20% Flat/Non Stick | PP-I W B | PE N B | 5.0 | 0.20 | K600 | 151.1 | 5.99 |
| | | | 25.4 | 1.00 | | | |
| | | PE-I N B | 50.8 | 2.00 | | | |
| | | | 76.2 | 3.00 | | | |
| | | | 101.6 | 4.00 | | | |

Flights on 25.4 mm (1.00 in) are cut down from 50.8 mm (2.00 in).

Accessories

Tab / Single Link Only

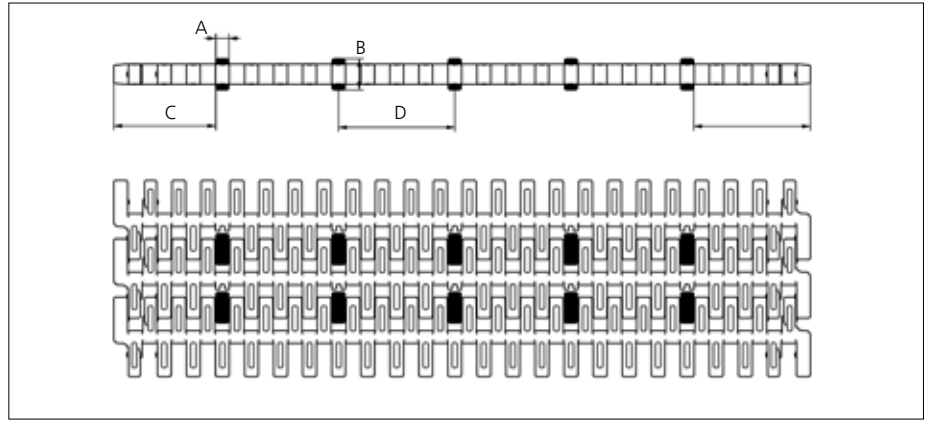
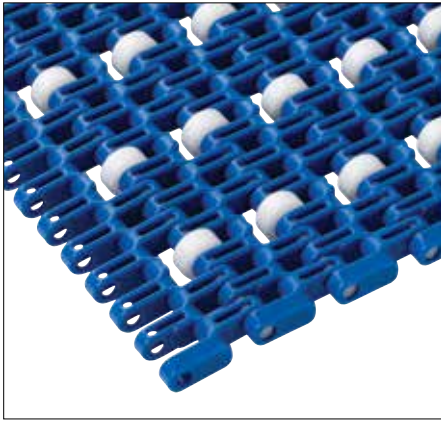


| Type | Tab Material & color | V | | Z | | A | | B | | Link size | Width | |
|---------------------|-------------------------------|------|------|------|------|------|------|------|------|-----------|-------|------|
| | | mm | in | mm | in | mm | in | mm | in | | mm | in |
| M2 34% Bottom Guide | POM-D B PP B | 7.50 | 0.29 | 15.0 | 0.59 | 33.5 | 1.19 | 42.7 | 1.68 | K325 | 82.3 | 3.24 |
| | | | | | | | | | | K335 | 85.0 | 3.35 |
| | | | | | | | | | | K450 | 114.3 | 4.50 |
| | | | | | | | | | | K600 | 152.1 | 5.99 |
| | | | | | | | | | | K750 | 189.4 | 7.46 |

Non Standard material and color: See uni Material and Color Overview.

Accessories

Rollers NON STANDARD

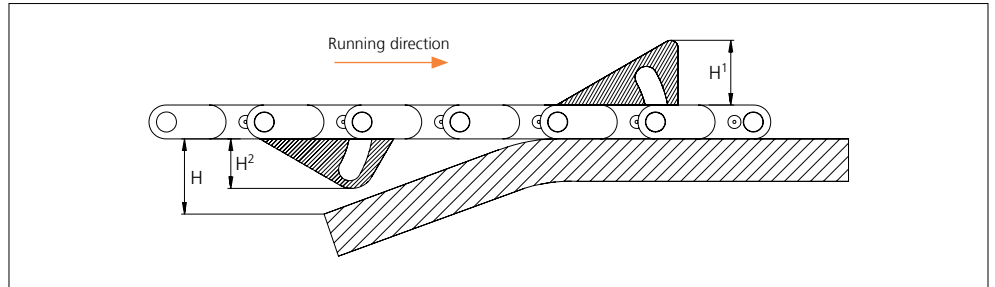


| Type | Roller material & color | A | | B | | C | | D | | E | |
|---------|-------------------------|-----|------|------|------|------|------|------|------|------|------|
| | | mm | in | mm | in | mm | in | mm | in | mm | in |
| Plastic | POM-D W | 5.7 | 0.22 | 13.5 | 0.53 | 44.6 | 1.75 | 50.8 | 2.00 | 51.0 | 2.01 |

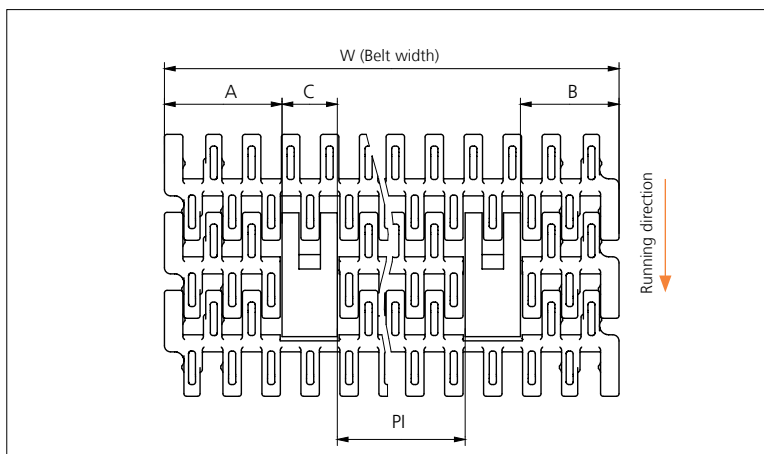
Non Standard material and color: See uni Material and Color Overview.

Accessories

AmFlight



| Type | Material & color | H | | H ¹ | | H ² | |
|------|------------------|------|------|----------------|------|----------------|------|
| | | mm | in | mm | in | mm | in |
| Push | PE W | 17.0 | 0.67 | 17.0 | 0.67 | 14.4 | 0.57 |



| | mm | in |
|---------------|-----------|----------|
| A min | 38.3 | 1.51 |
| B min | 32.1 | 1.26 |
| C | 18.0 | 0.71 |
| PI max | W - 106.4 | W - 4.19 |
| PI min | 33.2 | 1.31 |

Increment: 12.7 mm (0.50 in).

Sprocket

| No. of teeth | Bore size | | | | | | | | | | Overall diameter | | Pitch diameter | | Hub diameter | | Dimension A | | Dimension B | | Single row/Two way | Molded | PA6 LG |
|--------------|------------|------|------|------|------|------|------|------|------|-------|------------------|-------|----------------|-------|--------------|------|-------------|------|-------------|---|--------------------|--------|--------|
| | Pilot Bore | in | | mm | | mm | | in | | mm | | | | | | | | | | | | | |
| | | 0.98 | 1.00 | 1.18 | 1.25 | 1.50 | 1.57 | 2.36 | 2.50 | mm | in | mm | in | mm | in | mm | in | | | | | | |
| Z10 | ✓ | | ● | ● | ● | ■ | ● | | | 86.0 | 3.39 | 82.2 | 3.24 | 63.0 | 2.48 | 34.7 | 1.37 | 45.5 | 1.79 | ✓ | ✓ | | |
| Z12 | ✓ | ■ | ● | ■ | ● | ■ | ■ | ■ | | 103.2 | 4.06 | 98.1 | 3.86 | 65.0 | 2.56 | 43.0 | 1.69 | 53.5 | 2.11 | ✓ | ✓ | | |
| Z18 | ✓ | | | ● | ● | ■ | ■ | ■ | | 151.9 | 5.98 | 146.3 | 5.76 | 65.0 | 2.56 | 67.6 | 2.66 | 77.6 | 3.06 | ✓ | ✓ | | |
| Z18 | ✓ | | | | | | | ■ | ■ | 151.9 | 5.98 | 146.3 | 5.76 | 120.0 | 4.72 | 67.6 | 2.66 | 77.6 | 3.06 | ✓ | ✓ | | |
| Z19 | ✓ | | | ● | ● | ■ | ■ | ■ | | 160.0 | 6.30 | 154.3 | 6.07 | 65.0 | 2.56 | 71.7 | 2.82 | 81.6 | 3.21 | ✓ | ✓ | | |
| Z19 | ✓ | | | | | | | ■ | ■ | 160.0 | 6.30 | 154.3 | 6.07 | 120.0 | 4.72 | 71.7 | 2.82 | 81.6 | 3.21 | ✓ | ✓ | | |
| Z20 | ✓ | | | ● | ● | ■ | ■ | ■ | | 168.2 | 6.62 | 162.4 | 6.39 | 65.0 | 2.56 | 75.8 | 2.98 | 85.6 | 3.37 | ✓ | ✓ | | |
| Z20 | ✓ | | | | | | | ■ | ■ | 168.2 | 6.62 | 162.4 | 6.39 | 120.0 | 4.72 | 75.8 | 2.98 | 85.6 | 3.37 | ✓ | ✓ | | |

■ Molded sprocket

● Molded sprocket



Other sprocket sizes are available upon request.

Other bore sizes on sprockets are available upon request.

Max. load per sprocket shown does not take bore size into account.

Please also ensure that sufficient size shaft is chosen for corresponding load.

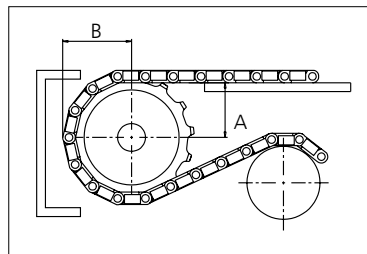
Width of tooth = Single row: 6.0 mm (0.24 in)

Width of One-part sprocket = Single row: 25.0 mm (0.98 in)

uni UltraClean Two-Part Sprocket

| No. of teeth | Bore size | | | | | Overall diameter | | Pitch diameter | | Hub diameter | | Dimension A | | Dimension B | | Single row/Two way | Molded | PA6 W |
|--------------|-----------|----------------|----------------|----------------|----------------|------------------|------|----------------|------|--|--|-------------|------|-------------|------|--------------------|--------|-------|
| | in | 1.50 | 1.57 | 2.36 | 2.50 | | | | | | | | | | | | | |
| | mm | 38.1 | 40.0 | 60.0 | 63.5 | mm | in | mm | in | mm | in | mm | in | | | | | |
| Z12 | | ■ | ■ | | | 103.2 | 4.06 | 98.1 | 3.86 | 80.0 | 3.15 | 43 | 1.69 | 53.5 | 2.11 | ✓ | ✓ | |
| Z15 | | ■ | ■ | | | 127.5 | 5.02 | 122.2 | 4.81 | 80.0 | 3.15 | 55.4 | 2.18 | 65.5 | 2.58 | ✓ | ✓ | |
| Z19 | | ¹ ■ | ¹ ■ | ² ■ | ² ■ | 160.0 | 6.30 | 154.3 | 6.07 | ¹ 118.0 ² 126.0 | ¹ 4.65 ² 4.96 | 71.7 | 2.82 | 81.6 | 3.21 | ✓ | ✓ | |
| Z20 | | | ■ | | | 168.2 | 6.62 | 162.4 | 6.39 | 118 | 118.0 | 75.8 | 2.98 | 85.6 | 3.37 | ✓ | ✓ | |

■ Moulded uni UltraClean TwoPart Sprocket



Width of UltraClean Two-part sprocket = Single row: 44.0 mm (1.73 in)

Width of UltraClean Two-part sprocket, tooth = Single row: 6.0 mm (0.24 in)

uni Retainer Rings: See uni Retainer Ring data sheet.

For correct sprocket position: See uni Assembly Instructions for uni SNB M2.

For more detailed sprocket information, contact Customer Service.



Synthetic Belts



Endless Woven Belts



Modular Belts



Engineered Belts



Homogeneous Belts



Fabrication & Service

Expert advice and quality solutions for all your belting needs.

ammeraalbeltech.com
eptool.online

Ammeraal Beltech Modular A/S

Hjulmagervej 21
DK-7100 Vejle
T +45 7572 3100

ammerga.com

This information is subject to alteration due to continuous development. Ammeraal Beltech will not be held liable for the incorrect use of the above stated information. This information replaces previous information. All activities performed and services rendered by Ammeraal Beltech are subject to general terms and conditions of sale and delivery, as applied by its operating companies.

Member of Ammega Group.