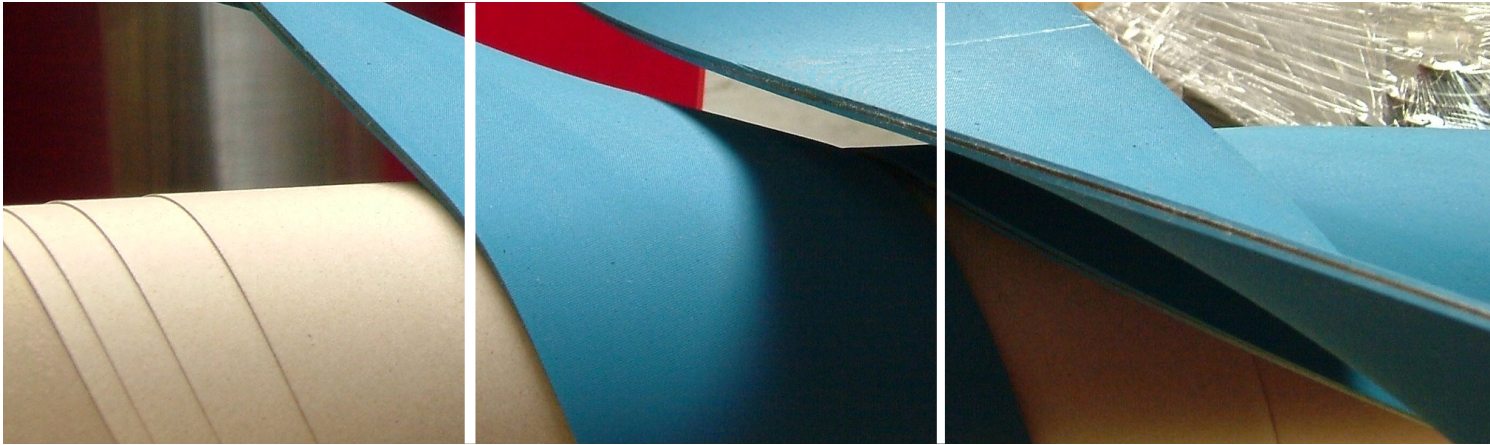


Tube Winding

RAPPLON® and AmTube Belts



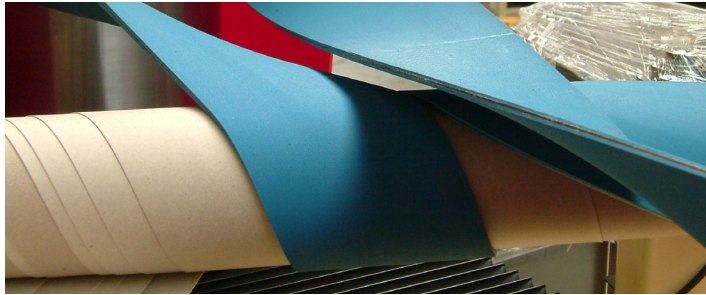
When precise spiral winding is of the utmost importance.

As part of Ammeraal Beltech's ongoing commitment to innovation we have belts available for light, medium and heavy tube winding. These belts have a constant coefficient of friction ensuring extremely precise spiral winding and are highly wear resistant to paper abrasion.

RAPPLON® and AmTube Belts are developed to wrap tensioned plies of glued paper around pulleys and mandrels in the production of paper tubing. These belts are endless and have an accurate length and width made to wrap very tightly around mandrels to produce high quality paper tubes.

RAPPLON® and AmTube belts ... offer solutions for all paper tube sizes

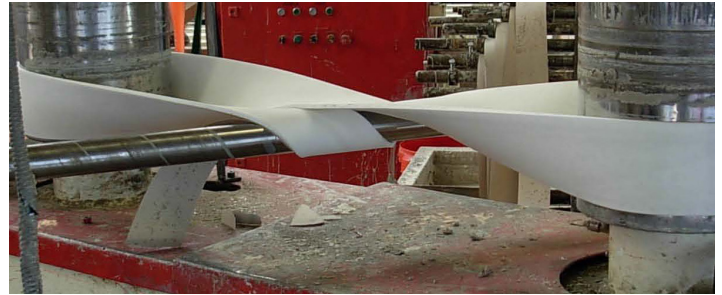
RAPPLON® Classic Flat Belts with TNBR Rubber for light and medium tubes



This range of RAPPLON® belts is designed for spiral winding, ensures extremely precise tubes when processing small and medium size tubes.

- Stretched polyamide foil as tension member for the highest efficiency and optimal elasticity
- New rubber compound with added wear resistance for longest lifetime and constant high friction ensuring extremely precise spiral winding
- Highly flexible single-ply tension member allow to wrap also small tubes

AmTube 500 and AmTube 700 for medium and heavy tubes



This range of endless woven AmTube Belts provides the best belting solutions to cope with specific and tough conditions found on medium to heavy tube winders.

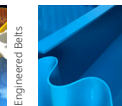
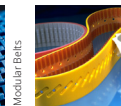
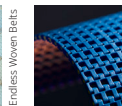
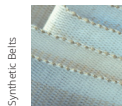
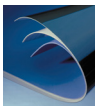
- Endless woven construction without any splice
- Special strong tension member up to 90 N/mm at 1% elongation
- Seamless fabric construction
- Seamless PU-cover
- Excellent force-elongation properties
- Ideal combination of cover resistance and high friction
- Fully closed edges to avoid edge fraying

Belt Data

Belt type	RAPPLON® GG S04.14 RRC 54731	RAPPLON® GG S07.30 RRC 54243	RAPPLON® GG S09.30 RRC 54736	RAPPLON® GG S11.50 RRC 54278	AmTube 500	AmTube 700
Belt thickness [mm]	1.3	3.0	3.0	5.0	4.0 - 7.0	8.0 - 14.0
Belt factor at 1% elongation [N/mm]	4	7	9	11	50	90
Recommended elongation [%]	2.0 - 3.0	2.0 - 3.0	2.0 - 3.0	2.0 - 3.0	0.5	0.5
Tension member material	Polyamide Foil	Polyamide Foil	Polyamide Foil	Polyamide Foil	Polyester Endless Woven	Polyester Endless Woven
Cover material, colour, surface	TNBR, grey, rough	TNBR, blue, rough	TNBR, blue, rough	TNBR, blue, rough	Ropan 70, white, ground	Ropan 70, white, ground

Belt Selection Guide

Belt type	RAPPLON® GG S04.14 RRC 54731	RAPPLON® GG S07.30 RRC 54243	RAPPLON® GG S09.30 RRC 54736	RAPPLON® GG S11.50 RRC 54278	AmTube 500	AmTube 700
Min. core inner diameter [mm]	18	30	40	40	32	44
Min. core outer diameter [mm]	20	32	50	50	40	60
Max. core outer diameter [mm]	40	50	80	120	80	1100
Max. wall thickness [mm]	2	4	6	10	2.0 - 8.0	4.0 - 16.0
Min. drive drum diameter [mm]	20	40	80	60	10 x belt thickness	10 x belt thickness



**Expert advice and quality solutions
for all your belting needs.**
ammeraalbeltech.com

Ammeraal Beltech
Ammeraal Beltech Inc.
Skokie, Illinois

T +1 800 533 3765
info-us@ammeraalbeltech.com

ammega.com

This information is subject to alteration due to continuous development. Ammeraal Beltech will not be held liable for the incorrect use of the above stated information. This information replaces previous information. All activities performed and services rendered by Ammeraal Beltech are subject to general terms and conditions of sale and delivery, as applied by its operating companies.