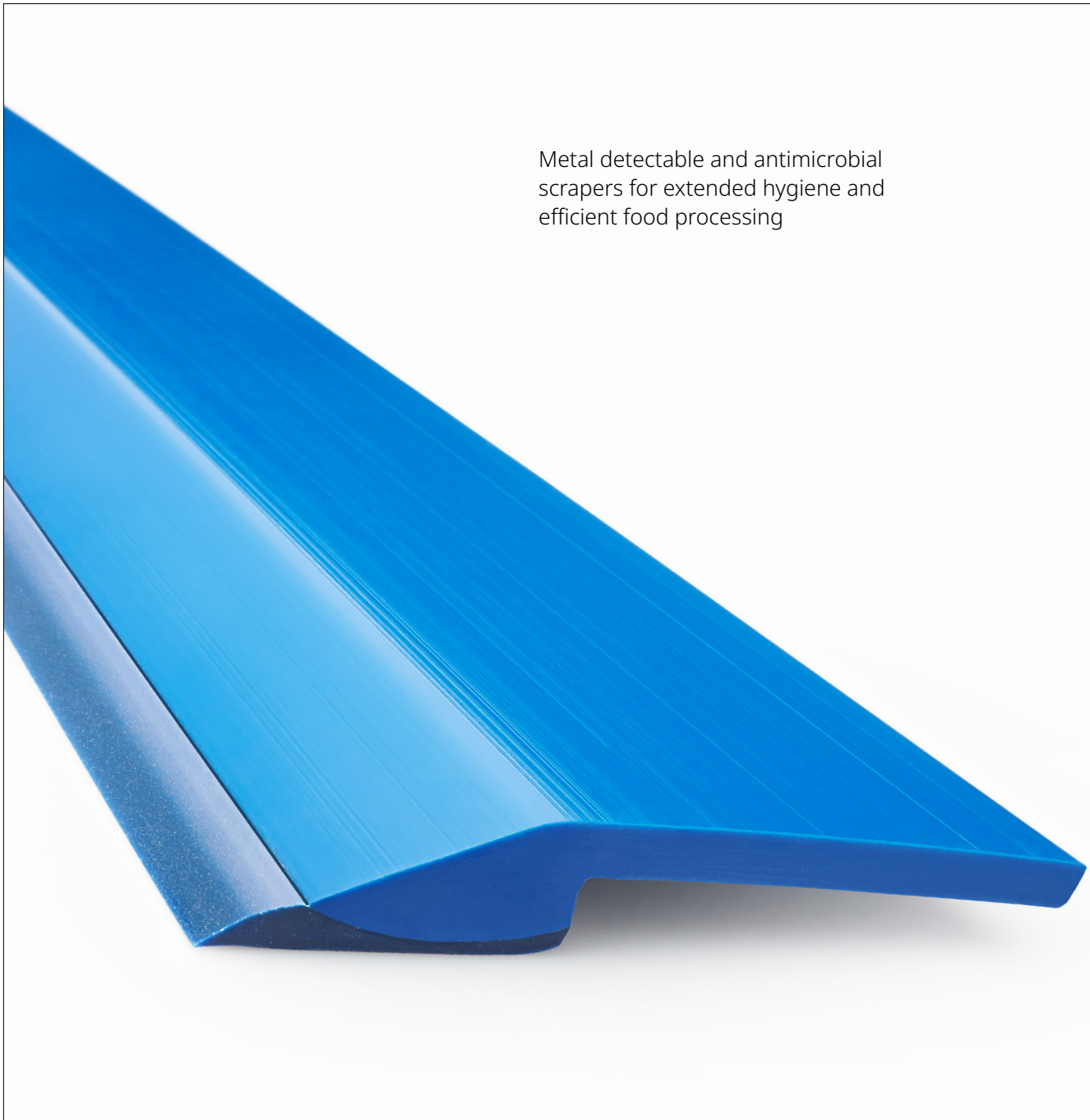


# UltraScraper

## Increases Hygiene and Food Safety

Metal detectable and antimicrobial scrapers for extended hygiene and efficient food processing



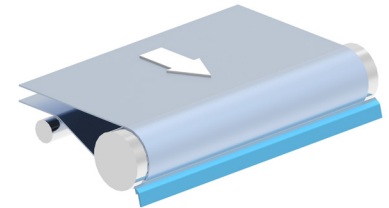
## Scrapers are an often required component in the Food Industry.

Food items can stick to different types of process and conveying belts, even to belts with non-stick properties. Thus, scraping and cleaning efficiency and effectiveness are key Food Industry issues.

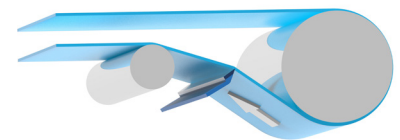
### Challenges

Problems with traditional belt scrapers include:

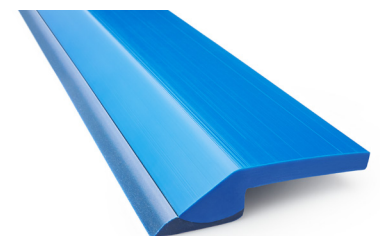
- poor cleaning performance
- short scraper lifetime
- high cost of maintenance, due to scraper positioning issues
- non Food Grade quality scrapers
- belt surface wear and tear caused by scraper
- compromised food quality from scraper material



Scraper placement against the drum



Scraper placement after the drum. Scraper can be placed on the top cover and/or the backside of the belt



Soft lip enables deep clean on the surface of the most common Ammeraal Beltech belt types

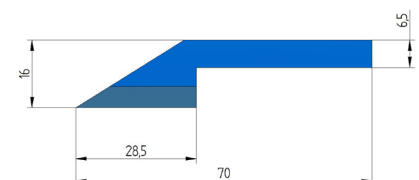
### Solutions

Ammeraal Beltech's superior designed UltraScraper, made of high quality co-extruded materials, can be used on most conveyor frames and provides the following advantages:

- *metal detectable for increased Food Safety*
- *Food Grade: EC and FDA regulatory compliance*
- AntiMicrobial (AM) properties with silver ion technology reducing bacteria build-up
- excellent cleaning effectiveness thanks to the UltraScraper's soft lip feature (aligned to belt hardness)
- extends belt & scraper lifetime (produces less stress on the belt and splice)
- suitable for different belt types (synthetic, homogeneous or plastic modular belts)

### Technical data

Article no.	TRSC000029
Material	Polyurethane
Colour	Light blue
Standard bar length	2.450 mm
Temperature range °C (°F)	-30 / +83 °C (-22 / +181 °F)
Food Grade	EC 1935/2004 and FDA



**The local partner of choice for sustainable conveyor belting solutions - around the globe.**



Scan the QR code and find your local contact

### Ammeraal Beltech

P.O. Box 38  
1700 AA Heerhugowaard  
The Netherlands

T +31 (0)72 575 1212

[www.ammeraalbeltech.com](http://www.ammeraalbeltech.com)