

# uni CSB



The versatile plastic modular belt  
for the Automotive Industry



The next generation of plastic modular belts for Automotive

# Introducing a new innovative product: uni CSB

**Ammeraal Beltech is globally recognized as the leading company for plastic modular belt conveying in the automotive industry.**

After more than 10 years of success in the industry, Ammeraal Beltech recognized a customer need for even more out of a plastic modular belt:

- Lower energy consumption
- Longer conveyor lengths and less transfers
- Higher load capacity
- Lower construction heights (less pit depth)
- Electrically conductive without compromising belt pull
- Flame retardant without compromising belt pull
- Good ergonomics and worker safety

The result of these customer's wishes is our new uni CSB. uni CSB is specially designed with and for the automotive industry, "heavy load" conveying and people moving industry.

This approach has resulted in a two unique belt features:

- 2 inch pitch belt rated at 100.000 N/m comparable to existing 2.5 inch and 3 inch pitch belts.
- Use of Dual Compound Technology (DCT) resulting in the world's first plastic "real modular" modular link.

Dual Compound Technology provides the uni CSB with a high versatility. This versatility allows for a combination of different materials within one conveyor belt to meet customer demands without compromising any of the belts remarkable features such as high allowable belt pull.

**uni CSB: The 2 inch pitch modular belt that can do what all other 2.5 inch pitch and 3 inch pitch belts can do... and more!**



**Ammeraal Beltech  
Modular  
uni CSB**

**Stronger belts at  
lower costs**

- 2 inch pitch means low construction heights and less pit depth required.
- Lower belt weight allows for a higher load, a longer center to center distance and less transfers.
- Lower belt weight results in less needed drive power, smaller drive motors and smaller gearboxes.
- Electrically conductive properties are added to the belt through cost efficient inserts without compromising belt pull as usual.
- The belt can be executed in a combination of B1\* fire rating and electrically conductive properties.

**Lower total cost of  
ownership**

- Long belt life due to high contact area and innovative belt bottom design.
- Less bottom wear at high surface pressure due to wear-resistant wheelplate inserts.
- Longer conveyors and higher loads on one conveyor.
- Low maintenance costs due to extremely low maintenance requirement.
- Lower belt weight results in lower energy consumption.

**Safe Walk**

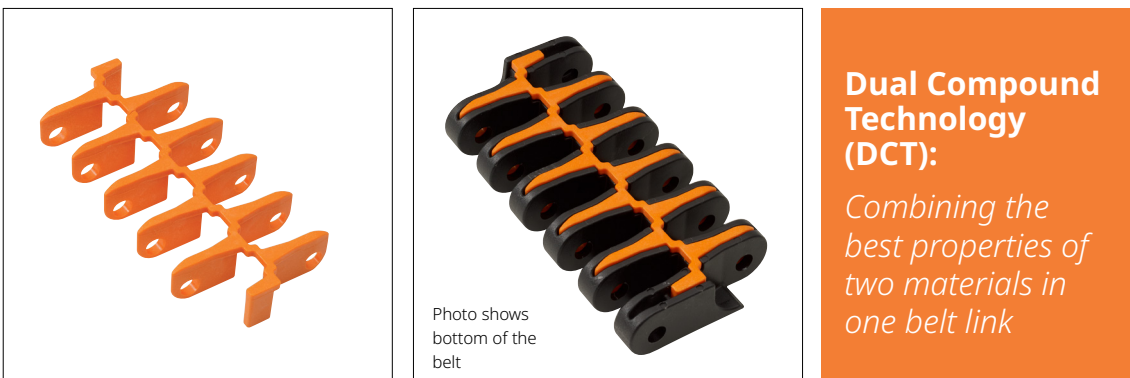
- Appropriate grip in dry and wet conditions.
- Low belt profile to avoid injuries and foot discomfort.
- Colored edges to visualize moving floors.

\*B1: Fire rated material (Flammability Class B1)

Base link open + electrical conductive insert = EC link



Base link closed + WP wear part insert = Wheel Plate



## Local Contacts

... and 150 more service contact points  
at [ammeraalbeltech.com](http://ammeraalbeltech.com)

### Argentina

T +54 11 4218 2906  
[info-ar@ammeraalbeltech.com](mailto:info-ar@ammeraalbeltech.com)

### Australia

T +61 3 8780 6000  
[info-au@ammeraalbeltech.com](mailto:info-au@ammeraalbeltech.com)

### Austria

T +43 171728 133  
[info-de@ammeraalbeltech.com](mailto:info-de@ammeraalbeltech.com)

### Belgium

T +32 2 466 03 00  
[info-be@ammeraalbeltech.com](mailto:info-be@ammeraalbeltech.com)

### Canada

T +1 905 890 1311  
[info-ca@ammeraalbeltech.com](mailto:info-ca@ammeraalbeltech.com)

### Chile

T +56 2 233 12900  
[info-cl@ammeraalbeltech.com](mailto:info-cl@ammeraalbeltech.com)

### China

T +86 512 8287 2709  
[info-cn@ammeraalbeltech.com](mailto:info-cn@ammeraalbeltech.com)

### Colombia

T +57 1 893 9890  
[info-co@ammeraalbeltech.com](mailto:info-co@ammeraalbeltech.com)

### Czech Republic

T +420 567 117 211  
[info-cz@ammeraalbeltech.com](mailto:info-cz@ammeraalbeltech.com)

### Denmark

T + 45 7572 3100  
[info-dk@ammeraalbeltech.com](mailto:info-dk@ammeraalbeltech.com)

### Finland

T +358 207 911 400  
[info-fi@ammeraalbeltech.com](mailto:info-fi@ammeraalbeltech.com)

### France

T +33 3 20 90 36 00  
[info-fr@ammeraalbeltech.com](mailto:info-fr@ammeraalbeltech.com)

### Germany

T +49 4152 937-0  
[info-de@ammeraalbeltech.com](mailto:info-de@ammeraalbeltech.com)

### Hungary

T +36 30 311 6099  
[info-hu@ammeraalbeltech.com](mailto:info-hu@ammeraalbeltech.com)

### India

T +91 44 265 34 244  
[info-in@ammeraalbeltech.com](mailto:info-in@ammeraalbeltech.com)

### Israel

T +972 4 6371485  
[info-il@ammeraalbeltech.com](mailto:info-il@ammeraalbeltech.com)

### Italy

T +39 051 660 60 06  
[info-it@ammeraalbeltech.com](mailto:info-it@ammeraalbeltech.com)

### Japan

T +81 52 433 7400  
[info-jp@ammeraalbeltech.com](mailto:info-jp@ammeraalbeltech.com)

### Luxembourg

T +352 26 48 38 56  
[info-lu@ammeraalbeltech.com](mailto:info-lu@ammeraalbeltech.com)

### Malaysia

T +60 3 806 188 49  
[info-my@ammeraalbeltech.com](mailto:info-my@ammeraalbeltech.com)

### Mexico

T +52 55 5341 8131  
[info-mx@ammeraalbeltech.com](mailto:info-mx@ammeraalbeltech.com)

### Netherlands

T +31 72 57 51212  
[info-nl@ammeraalbeltech.com](mailto:info-nl@ammeraalbeltech.com)

### Peru

T +51 1 713 0069  
[info-pe@ammeraalbeltech.com](mailto:info-pe@ammeraalbeltech.com)

### Poland

T +48 32 44 77 179  
[info-pl@ammeraalbeltech.com](mailto:info-pl@ammeraalbeltech.com)

### Portugal

T +351 22 947 94 40  
[info-pt@ammeraalbeltech.com](mailto:info-pt@ammeraalbeltech.com)

### Singapore

T +65 62739767  
[info-sg@ammeraalbeltech.com](mailto:info-sg@ammeraalbeltech.com)

### Slovakia

T +421 255648542  
[info-sk@ammeraalbeltech.com](mailto:info-sk@ammeraalbeltech.com)

### South Korea

T +82 31 448 3613-7  
[info-kr@ammeraalbeltech.com](mailto:info-kr@ammeraalbeltech.com)

### Spain

T +34 93 718 3054  
[info-es@ammeraalbeltech.com](mailto:info-es@ammeraalbeltech.com)

### Sweden

T +46 (0) 10 130 96 00  
[info-se@ammeraalbeltech.com](mailto:info-se@ammeraalbeltech.com)

### Switzerland

T +41 55 2253 535  
[info-ch@ammeraalbeltech.com](mailto:info-ch@ammeraalbeltech.com)

### Thailand

T +66 2 902 2604-13  
[info-th@ammeraalbeltech.com](mailto:info-th@ammeraalbeltech.com)

### Turkey

T +90 232 877 0700  
[info-tr@ammeraalbeltech.com](mailto:info-tr@ammeraalbeltech.com)

### United Kingdom

T +44 1992 500550  
[info-uk@ammeraalbeltech.com](mailto:info-uk@ammeraalbeltech.com)

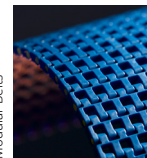
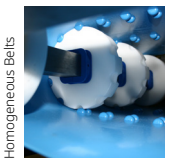
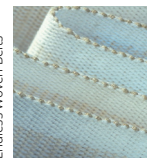
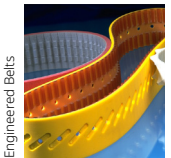
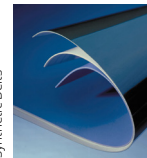
### United States

T +1 847 673 6720  
[info-us@ammeraalbeltech.com](mailto:info-us@ammeraalbeltech.com)

### Vietnam

T +84 8 376 562 05  
[info-vn@ammeraalbeltech.com](mailto:info-vn@ammeraalbeltech.com)

**Expert advice, quality solutions  
and local service  
for all your belting needs**



### General contact information:

**Ammeraal Beltech**  
P.O. Box 38  
1700 AA Heerhugowaard  
The Netherlands

T +31 (0)72 575 1212  
[info@ammeraalbeltech.com](mailto:info@ammeraalbeltech.com)

**[ammera.com](http://ammera.com)**